

# THE MADISON



*Elevation B*

*Shown with optional raised brick veneer, opt. metal roof on dormers & porch, opt. transoms, & opt. double front exterior doors*



*Elevation A*



*Elevation C*

*Shown with opt. raised stone veneer & opt. metal roof on porch*



*Elevation D*

*Shown with opt. metal roof on porch*

Updated 7.12.21



9245 Shady Grove Rd., Suite 200  
Mechanicsville, VA 23116  
[www.rcibuildersnewhomes.com](http://www.rcibuildersnewhomes.com)

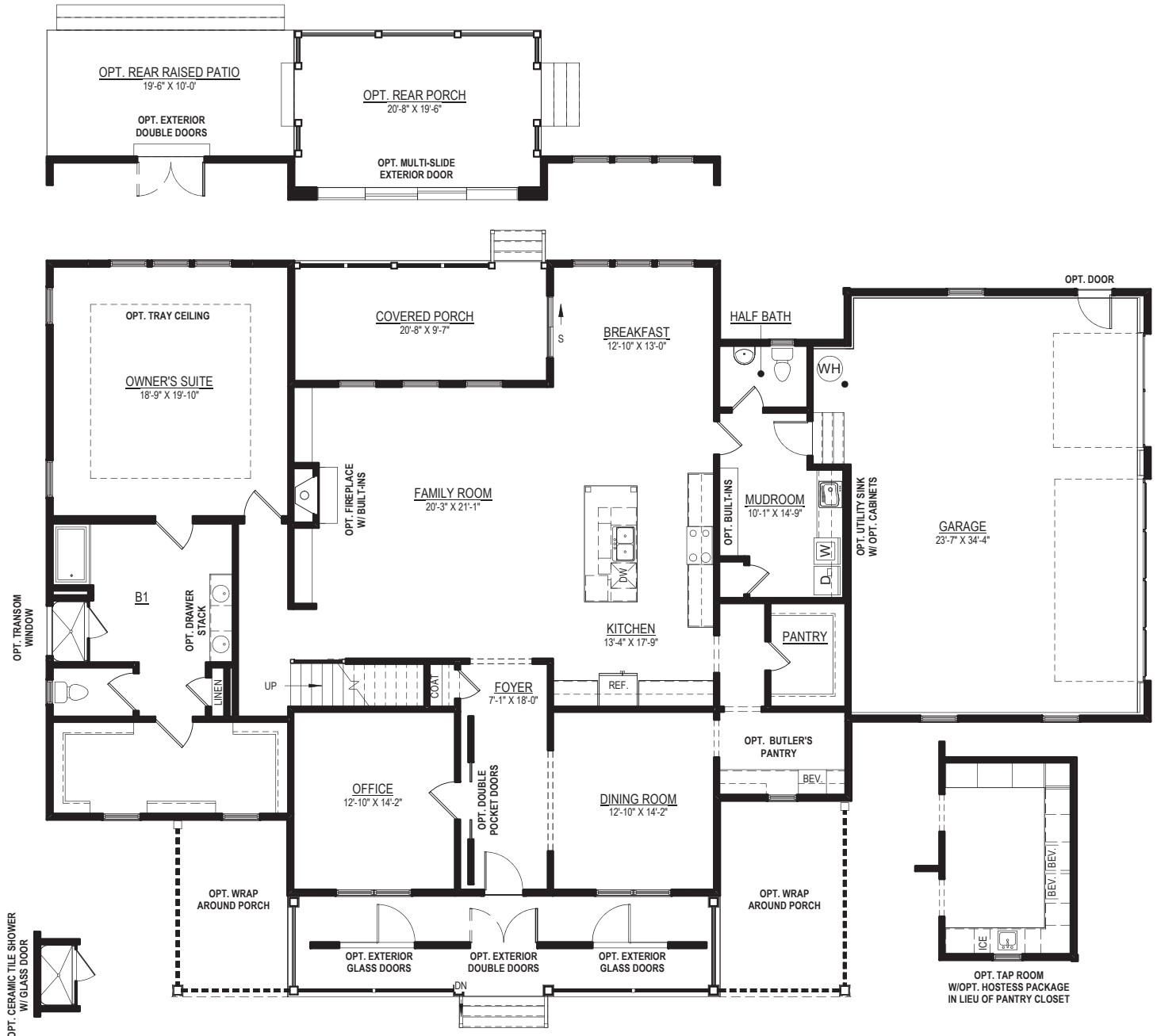
Elevations shown are artist's rendering. All plans, details, and square footages are approximate and subject to change. Illustrations may not represent finished construction details. All optional items indicated are available at additional cost. Not all features available are shown. Please ask our Sales Representative for complete information.





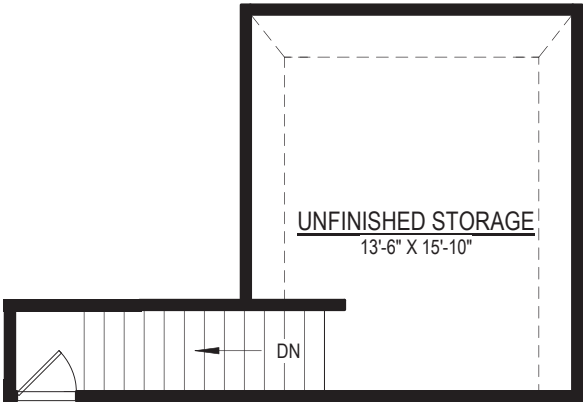
# THE MADISON

4 BEDROOMS, 3 FULL BATHS, HALF BATH, 3-CAR GARAGE,  
MUDROOM, UNFINISHED THIRD FLOOR STORAGE  
& OPT. WRAP AROUND PORCH

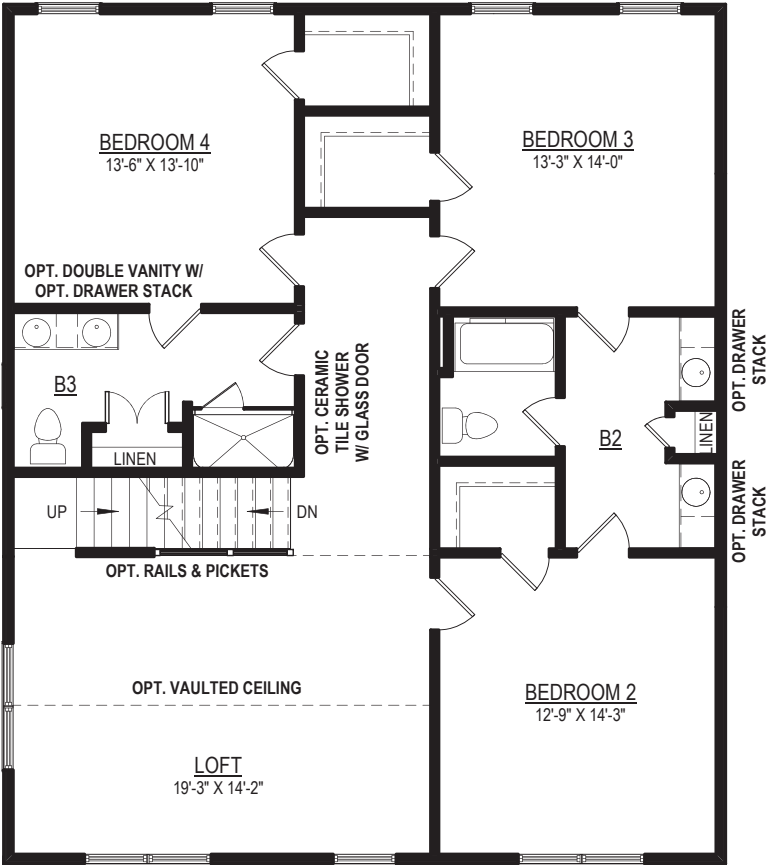


FIRST FLOOR PLAN

Elevations shown are artist's rendering. All plans, details, and square footages are approximate and subject to change. Illustrations may not represent finished construction details. All optional items indicated are available at additional cost. Not all features available are shown. Please ask our Sales Representative for complete information.

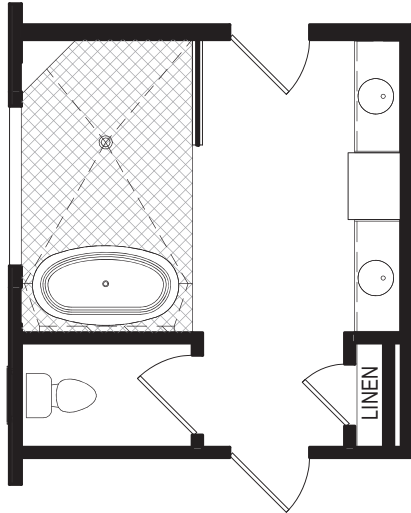


THIRD FLOOR PLAN

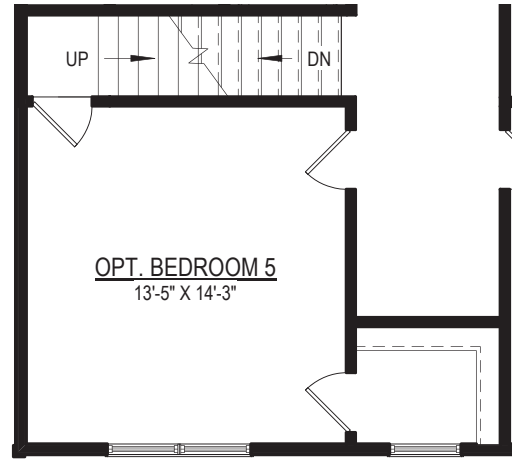


SECOND FLOOR PLAN

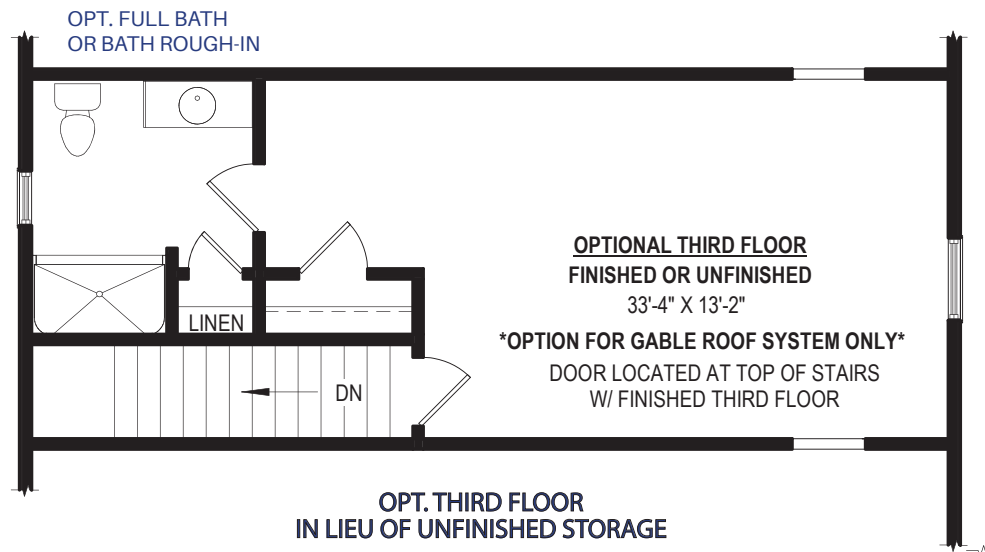
# Options



**OPT. LUXURY BATH W/OVERSIZED CERAMIC TILE "WET ROOM" & FREESTANDING TUB**



**OPT. BEDROOM #5  
IN LIEU OF LOFT**



**OPT. THIRD FLOOR  
IN LIEU OF UNFINISHED STORAGE**