

THE CREEKWOOD



Elevation C

Shown with optional side-entry garage and optional raised stone veneer



Elevation A

Shown with optional side-entry garage



Elevation B

Shown with optional side-entry garage and optional raised brick veneer



9245 Shady Grove Rd., Suite 200
Mechanicsville, VA 23116
www.rcibuildersnewhomes.com

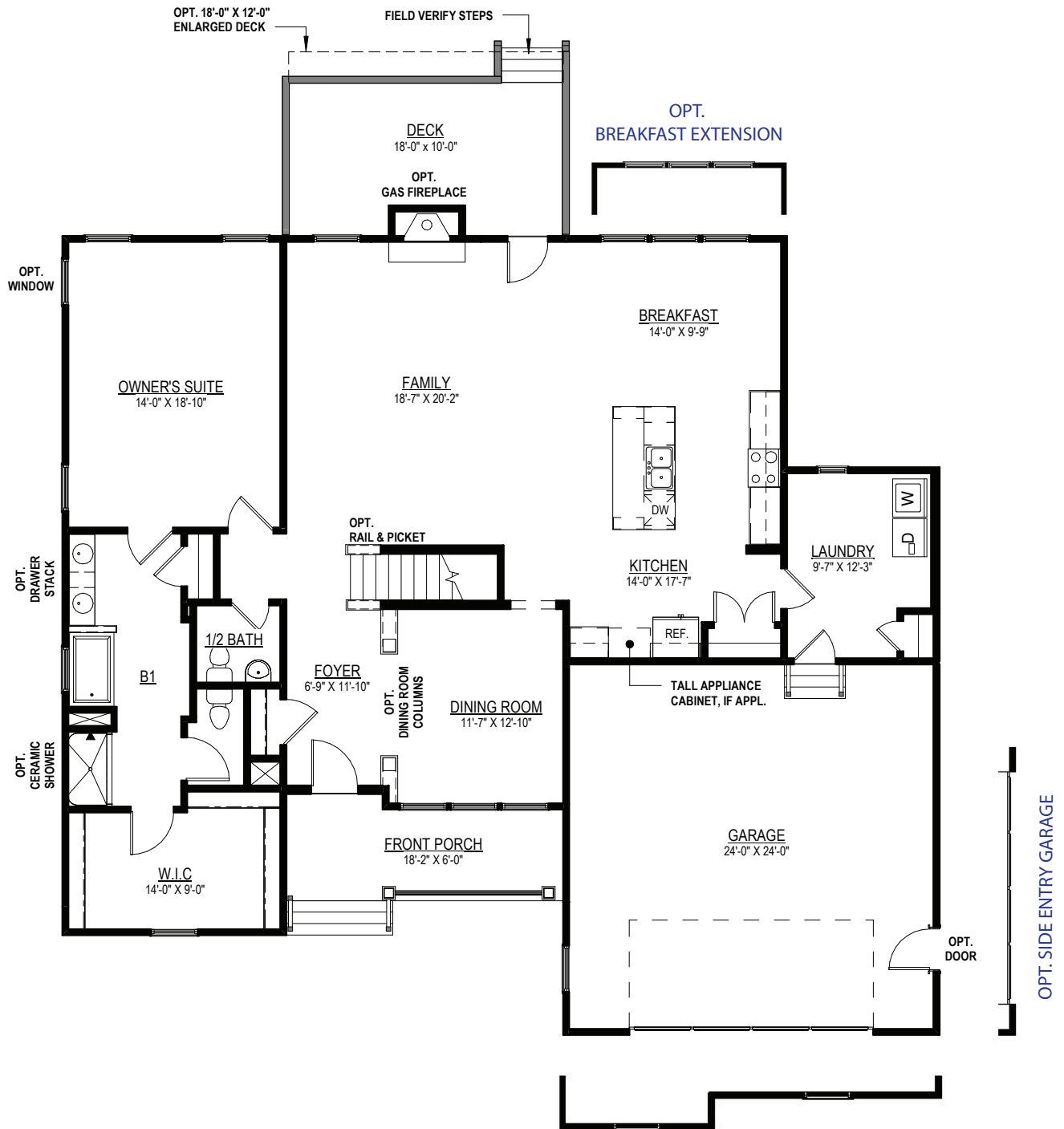
Elevations shown are artist's rendering. All plans, details, and square footages are approximate and subject to change. Illustrations may not represent finished construction details. All optional items indicated are available at additional cost. Not all features available are shown. Please ask our Sales Representative for complete information.



Updated 10.6.2023

THE CREEKWOOD

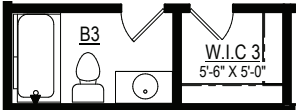
4 BEDROOMS, 2 & 1/2 BATHS,
FAMILY ROOM, OPTIONAL
SECOND FLOOR BEDROOM & BATH



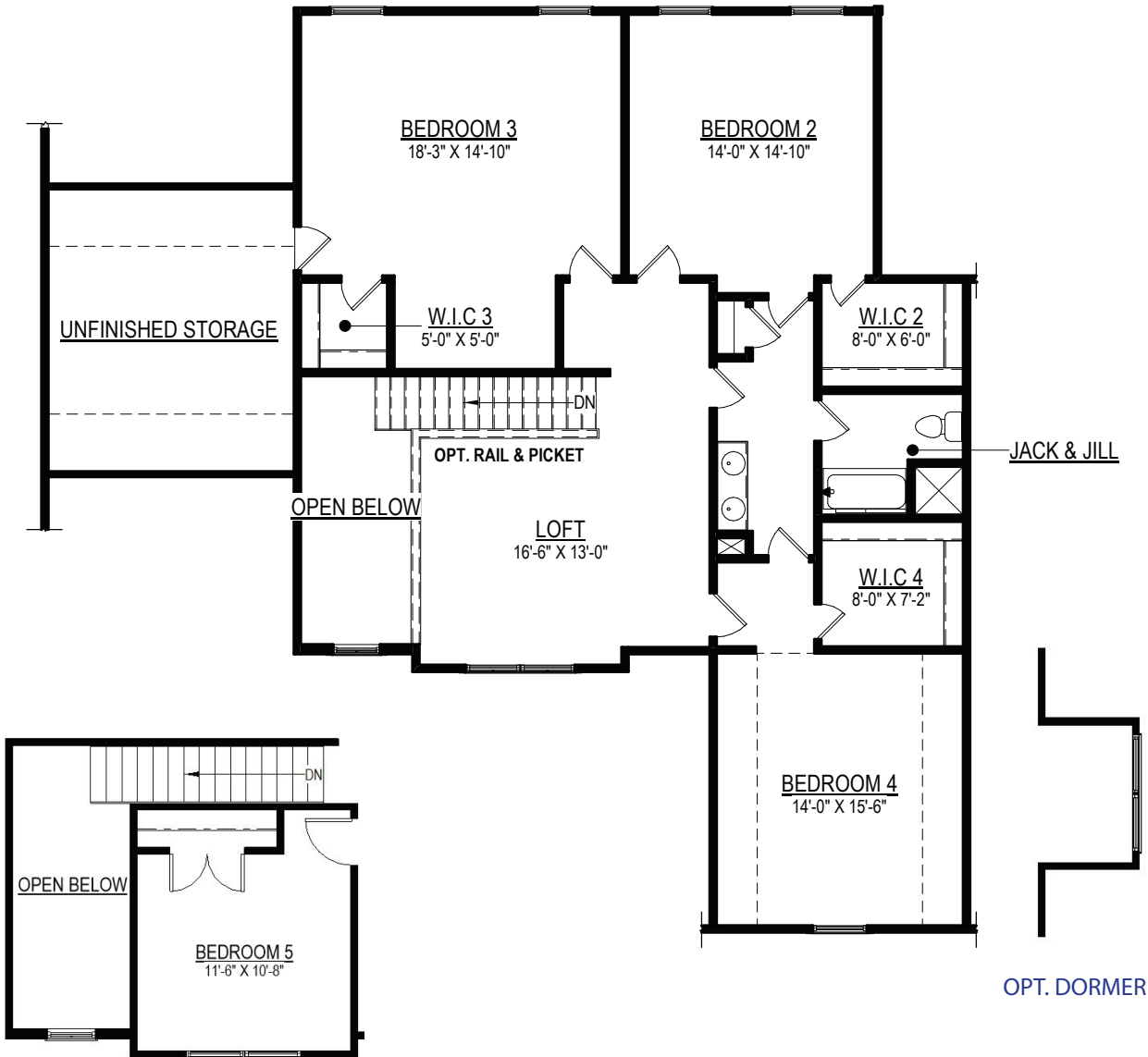
WINDOWS W/ SIDE ENTRY GARAGE

FIRST FLOOR PLAN

Elevations shown are artist's rendering. All plans, details, and square footages are approximate and subject to change. Illustrations may not represent finished construction details. All optional items indicated are available at additional cost. Not all features available are shown. Please ask our Sales Representative for complete information.



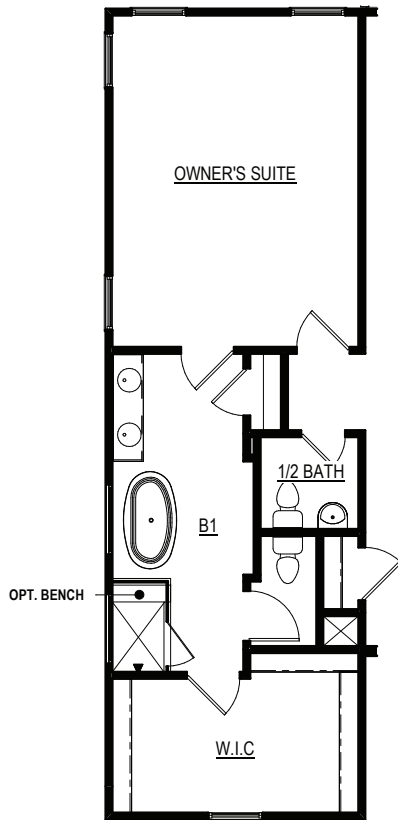
OPT. FULL BATH IN BEDROOM 3



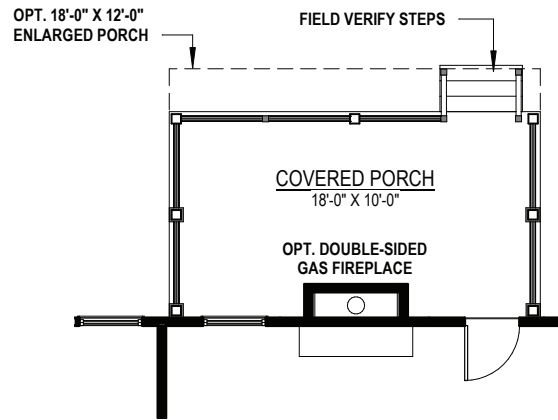
OPT. BEDROOM 5 IN-LIEU OF LOFT

SECOND FLOOR PLAN

Options



OPT.
FREESTANDING TUB + CERAMIC SHOWER
IN OWNER'S BATHROOM



OPT. REAR COVERED PORCH
IN-LIEU OF DECK