

THE HAYDEN-LEE



Elevation C



Elevation A



Elevation B

Shown with optional: raised brick veneer
(vertical siding standard
where brick is shown)



9245 Shady Grove Rd., Suite 200
Mechanicsville, VA 23116
www.rcibuildersnewhomes.com

Elevations shown are artist's rendering. All plans, details, and square footages are approximate and subject to change. Illustrations may not represent finished construction details. All optional items indicated are available at additional cost. Not all features available are shown. Please ask our Sales Representative for complete information.



Updated 09.25.23

THE HAYDEN-LEE

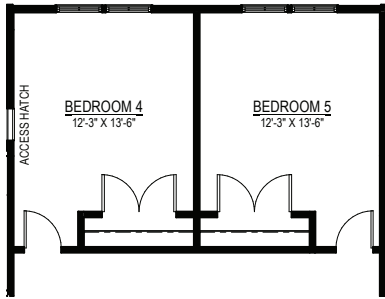
3 BEDROOMS, 3 & 1/2 BATHS,
FAMILY ROOM AND
SECOND FLOOR LOFT



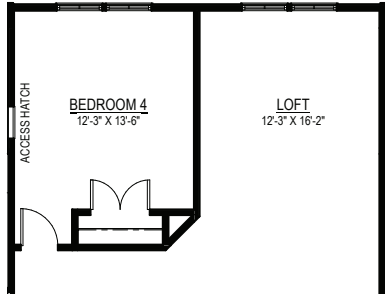
FIRST FLOOR PLAN

Elevations shown are artist's rendering. All plans, details, and square footages are approximate and subject to change. Illustrations may not represent finished construction details. All optional items indicated are available at additional cost. Not all features available are shown. Please ask our Sales Representative for complete information.

Floor Plan



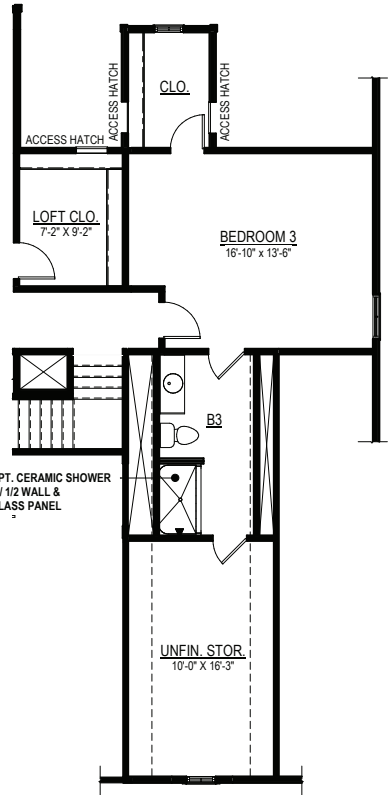
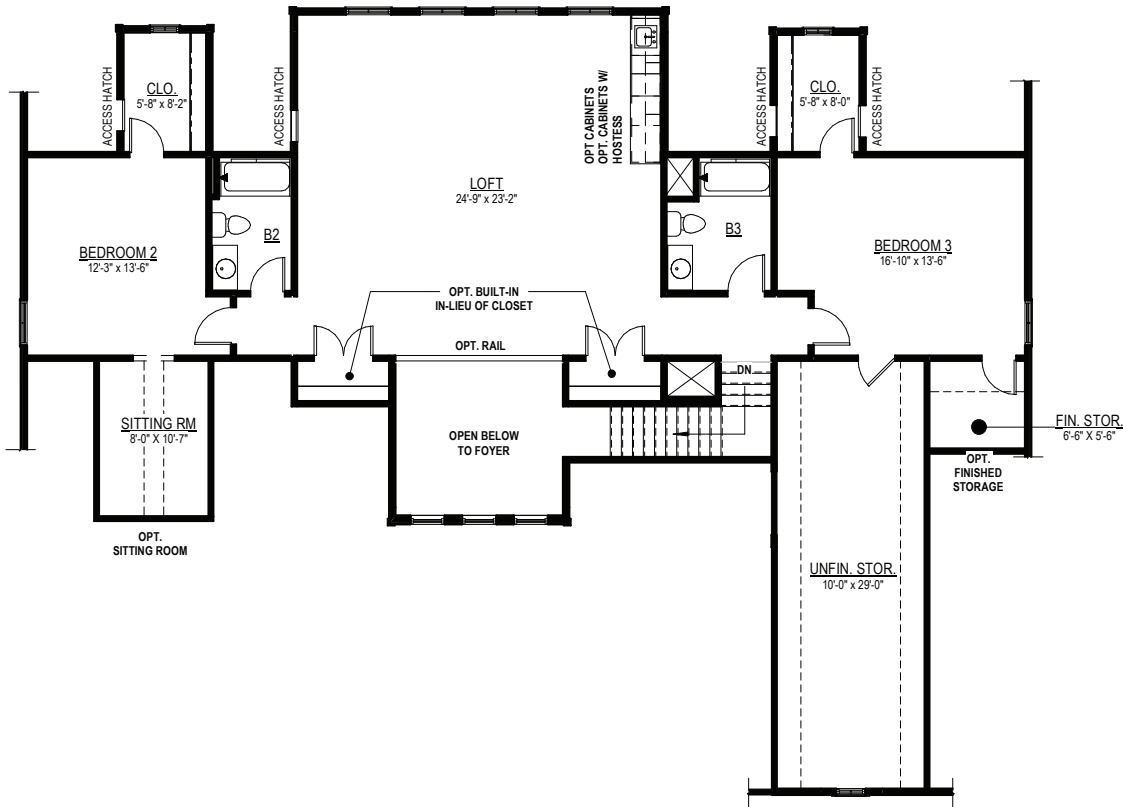
OPT. BEDROOM 4 & 5
IN-LIEU OF LOFT



OPT. BEDROOM 4



OPT. B3 DOOR LOCATION
TO BEDROOM 3
IN-LIEU OF ACCESS FROM HALL

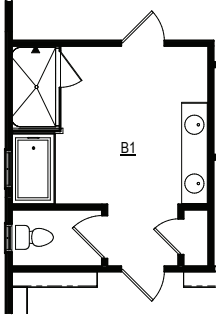


BEDROOM 3 W/ OPT. FULL BATH
(ADDS LOFT CLOSET IN-LIEU OF
ORIGINAL B3 LOCATION)
*ORIGINAL HALL BATH ALSO REMAINS
W/ OPT. BEDROOM 4 & 5
& THIS OPTION IS SELECTED TOGETHER

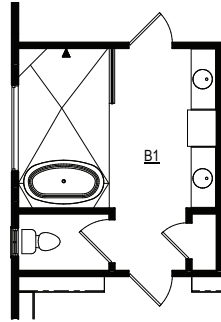
SECOND FLOOR PLAN

Elevations shown are artist's rendering. All plans, details, and square footages are approximate and subject to change. Illustrations may not represent finished construction details. All optional items indicated are available at additional cost. Not all features available are shown. Please ask our Sales Representative for complete information.

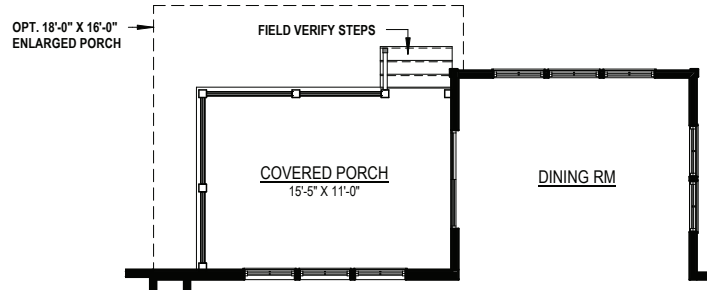
Options



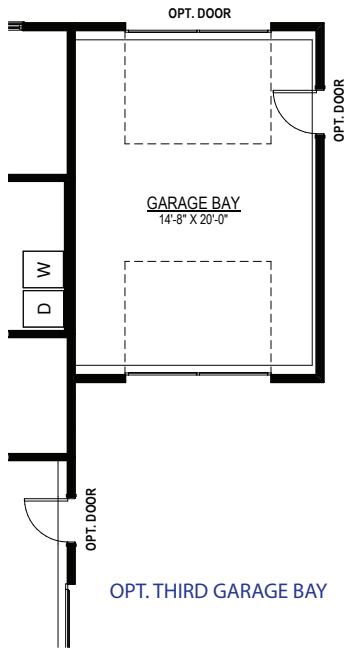
OWNER'S BATH W/ OPT. ENLARGED CERAMIC SHOWER



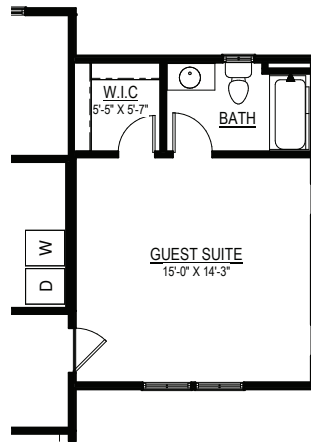
OWNER'S BATH W/ OPT. WET ROOM AND UPGRADED VANITY



OPT. REAR COVERED PORCH IN-LIEU OF DECK



OPT. THIRD GARAGE BAY



OPT. GUEST SUITE