

THE POWELL at Hobbs Hole



Elevation C

SHOWN WITH OPTIONAL SIDE-ENTRY GARAGE



Elevation A



Elevation B

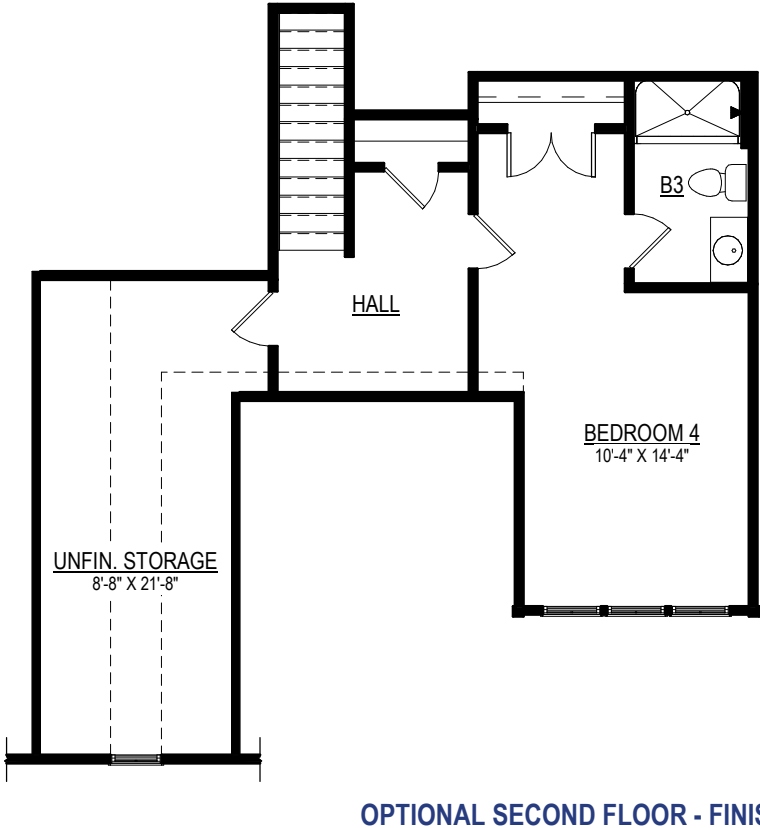
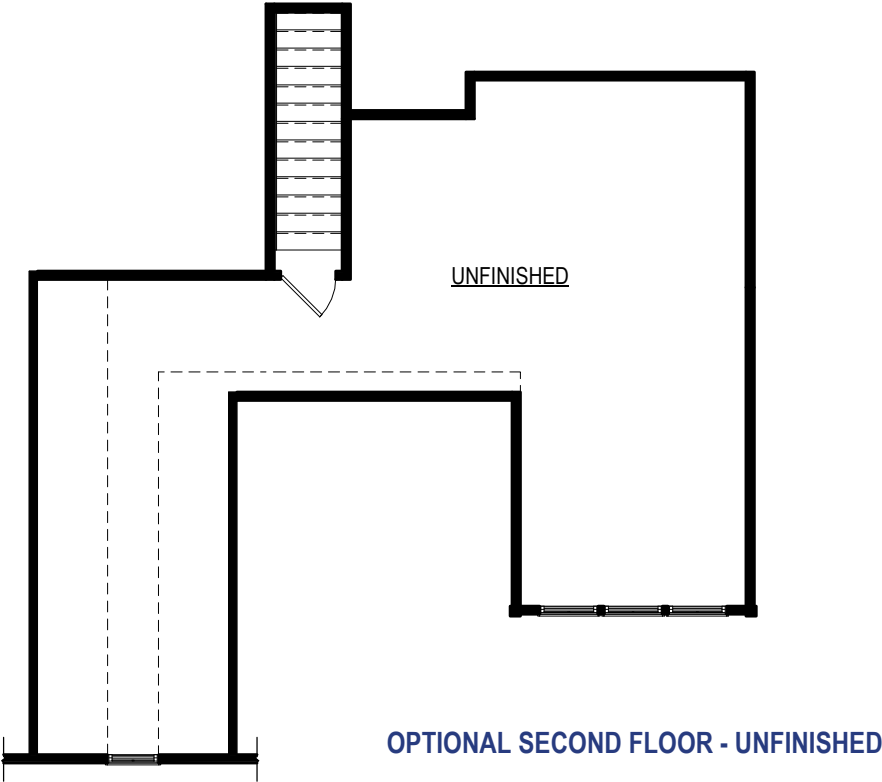


9245 Shady Grove Rd., Suite 200
Mechanicsville, VA 23116
www.rcibuildersnewhomes.com

Elevations shown are artist's rendering. All plans, details, and square footages are approximate and subject to change. Illustrations may not represent finished construction details. All optional items indicated are available at additional cost. Not all features available are shown. Please ask our Sales Representative for complete information.



Updated 08.25.22

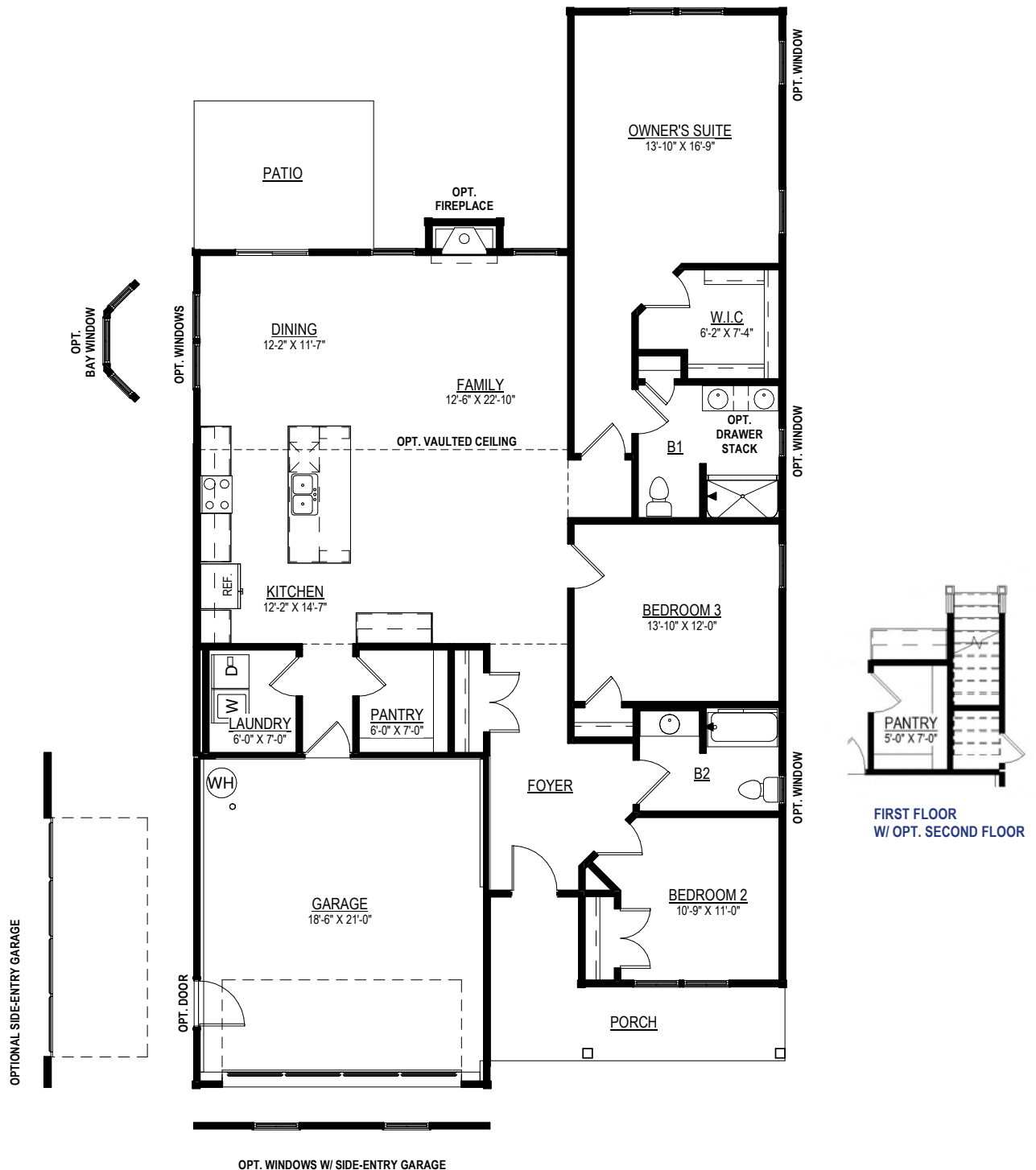


SECOND FLOOR PLAN

Elevations shown are artist's rendering. All plans, details, and square footages are approximate and subject to change. Illustrations may not represent finished construction details. All optional items indicated are available at additional cost. Not all features available are shown. Please ask our Sales Representative for complete information.

THE POWELL at Hobbs Hole

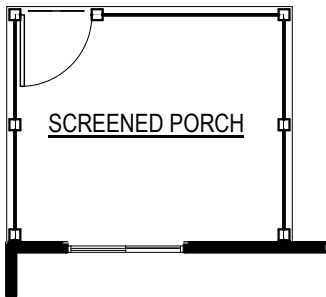
3 BEDROOMS, 2 BATHS,
FAMILY ROOM, OPTIONAL
SECOND FLOOR BEDROOM & BATH



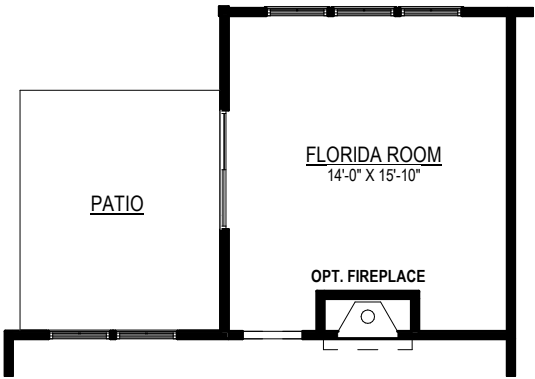
FIRST FLOOR PLAN

Elevations shown are artist's rendering. All plans, details, and square footages are approximate and subject to change. Illustrations may not represent finished construction details. All optional items indicated are available at additional cost. Not all features available are shown. Please ask our Sales Representative for complete information.

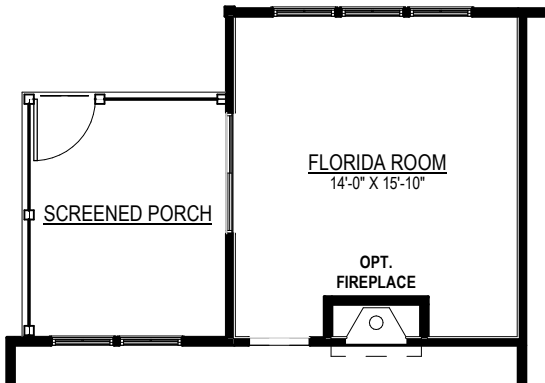
Options



OPT. SCREENED PORCH



OPT. FLORIDA ROOM



OPT. FLORIDA ROOM W/
OPT. SCREENED PORCH