

THE WESTPORT



Elevation C

Shown with optional: side-entry garage, extended front porch and raised stone watertable



Elevation A

Shown with optional: garage door w/ windows



Elevation B

Shown with optional: garage door w/ windows



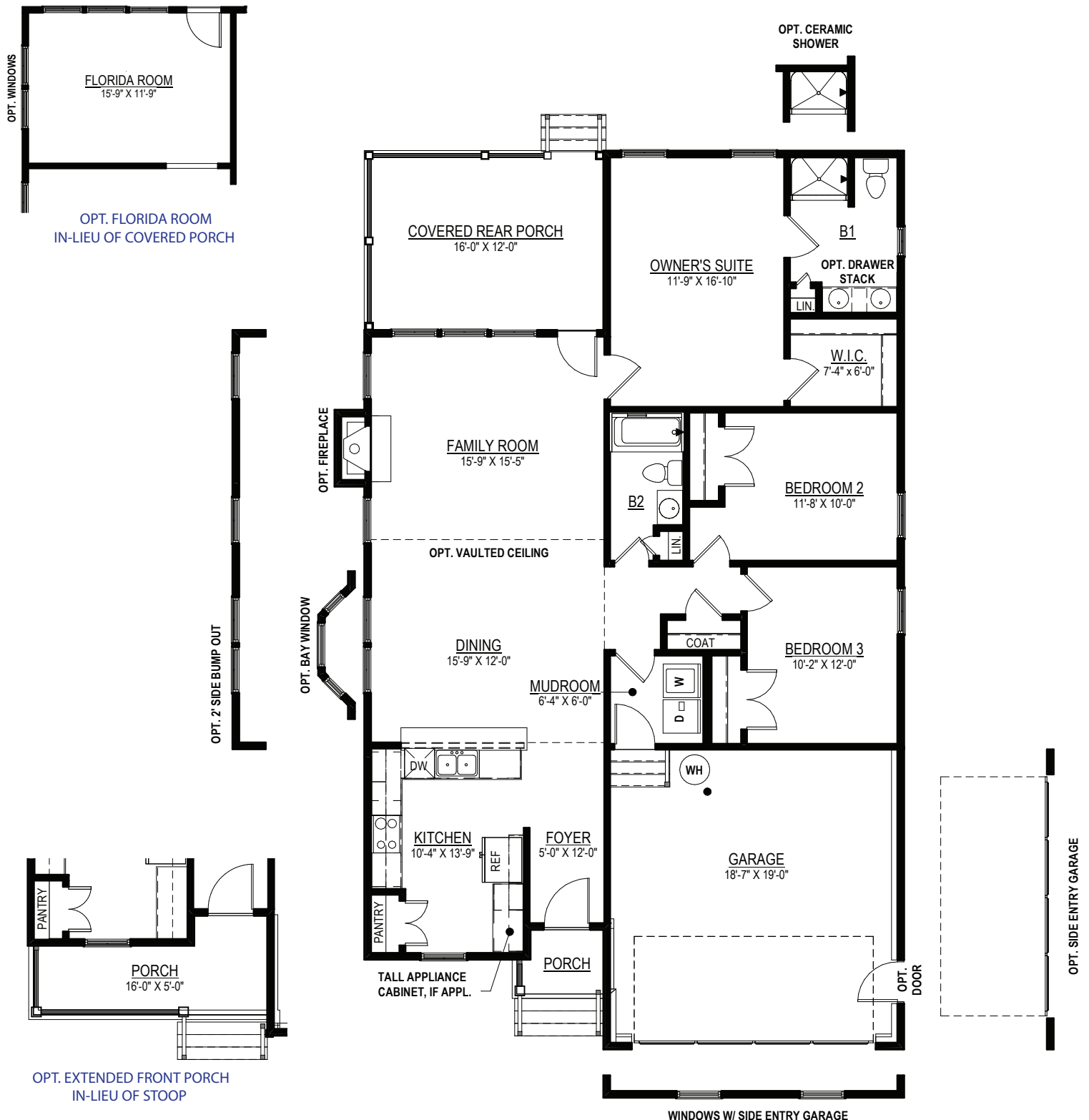
9245 Shady Grove Rd., Suite 200
Mechanicsville, VA 23116
www.rcibuildersnewhomes.com



THE WESTPORT

Floor Plan

3 BEDROOMS, 2 FULL BATHS,
FAMILY ROOM, & COVERED REAR PORCH



FIRST FLOOR PLAN

Elevations shown are artist's rendering. All plans, details, and square footages are approximate and subject to change. Illustrations may not represent finished construction details. All optional items indicated are available at additional cost. Not all features available are shown. Please ask our Sales Representative for complete information.