

THE CREEKWOOD



Elevation C

Shown with optional side-entry garage and optional raised stone veneer



Elevation A

Shown with optional side-entry garage



Elevation B

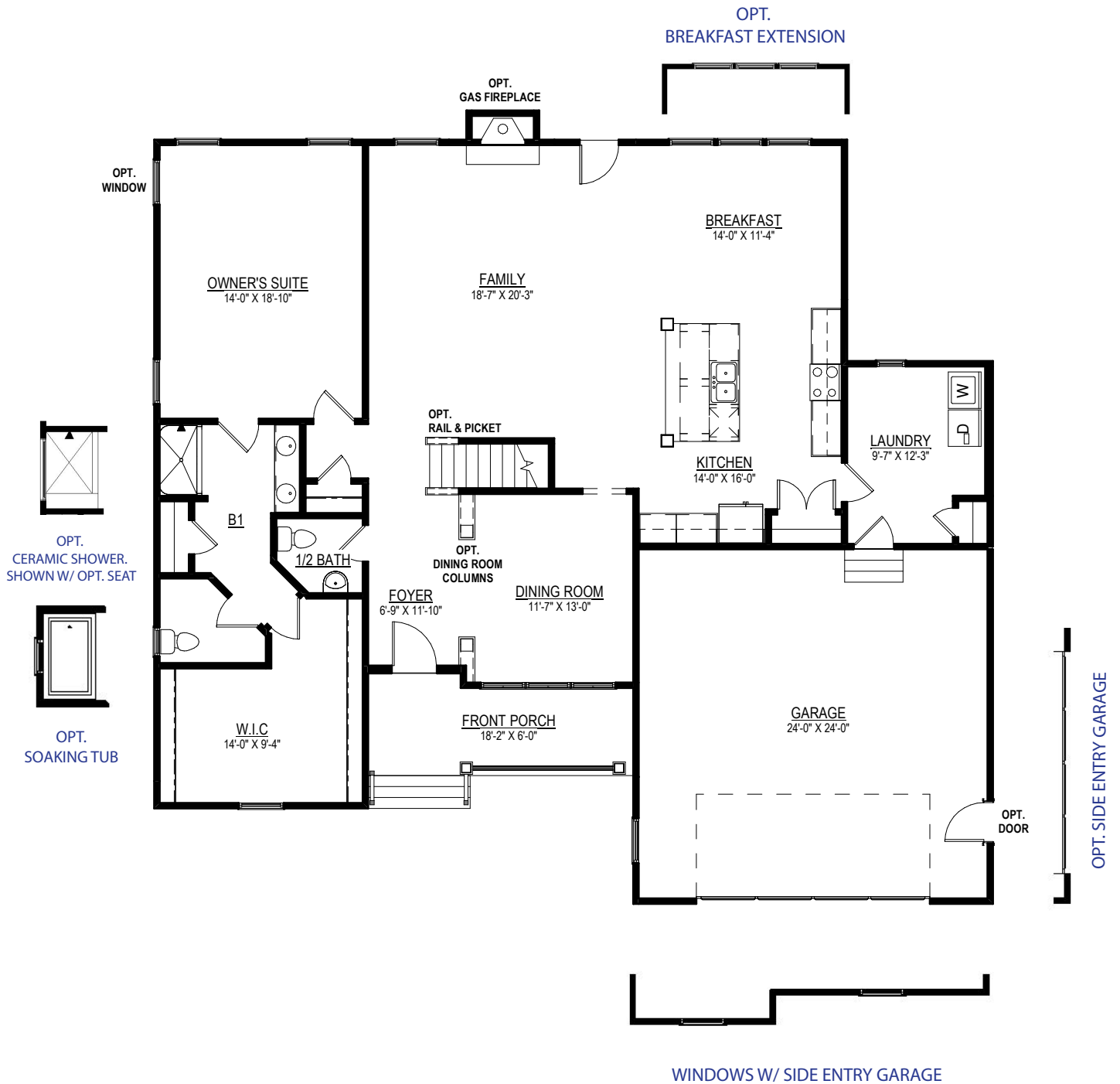
Shown with optional side-entry garage and optional raised brick veneer



9245 Shady Grove Rd., Suite 200
Mechanicsville, VA 23116
www.rcibuildersnewhomes.com

THE CREEKWOOD

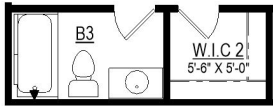
4 BEDROOMS, 2 & 1/2 BATHS,
FAMILY ROOM, OPTIONAL
SECOND FLOOR BEDROOM & BATH



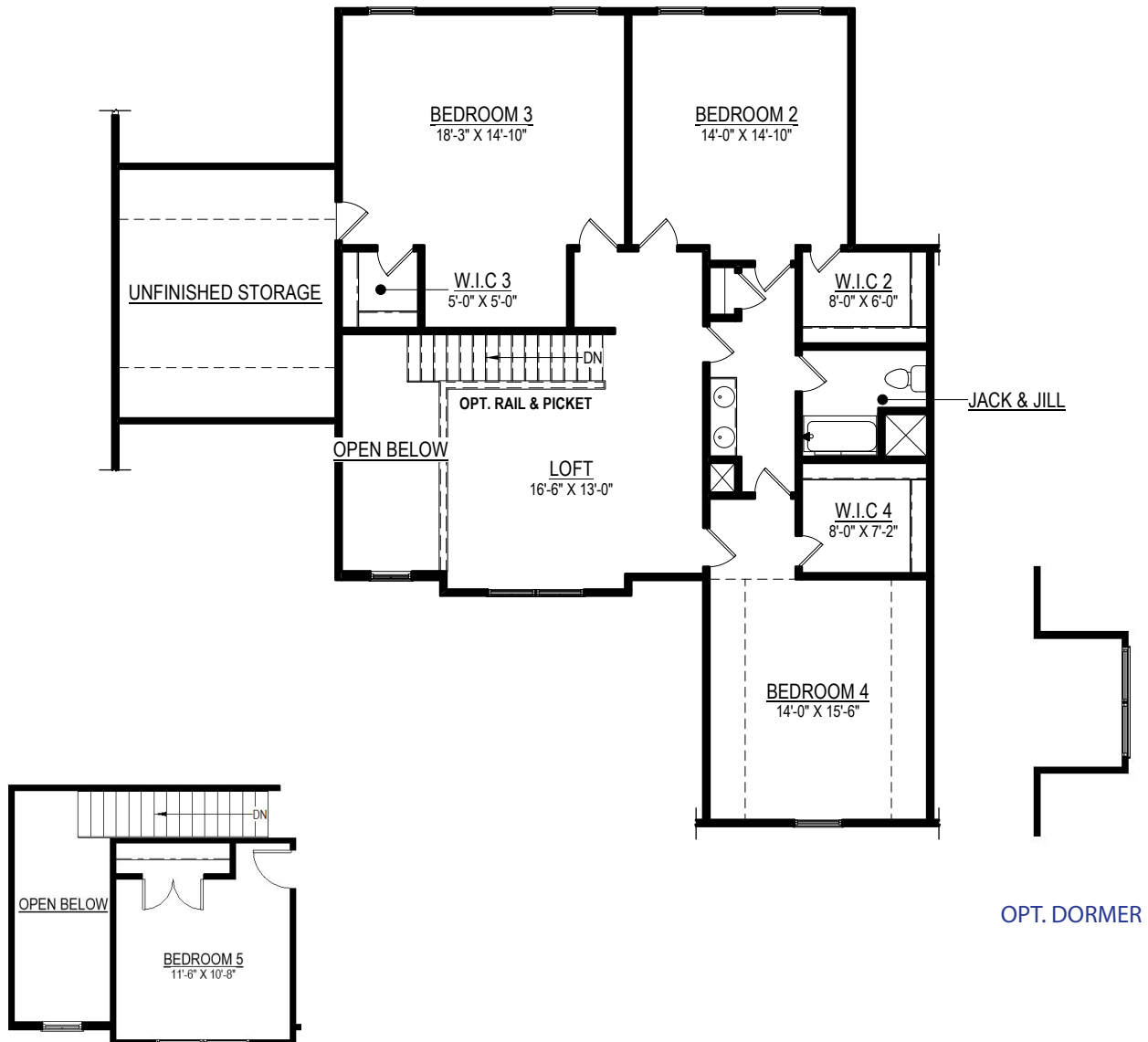
FIRST FLOOR PLAN

Elevations shown are artist's rendering. All plans, details, and square footages are approximate and subject to change. Illustrations may not represent finished construction details. All optional items indicated are available at additional cost. Not all features available are shown. Please ask our Sales Representative for complete information.

Floor Plan



OPT. FULL BATH IN BEDROOM 3

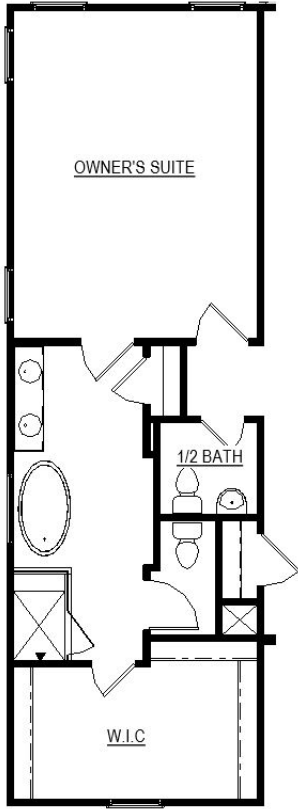


OPT. BEDROOM 5 IN-LIEU OF LOFT

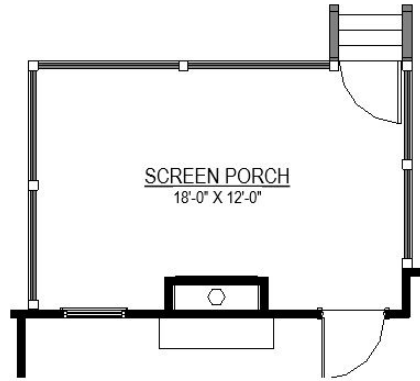
SECOND FLOOR PLAN

Elevations shown are artist's rendering. All plans, details, and square footages are approximate and subject to change. Illustrations may not represent finished construction details. All optional items indicated are available at additional cost. Not all features available are shown. Please ask our Sales Representative for complete information.

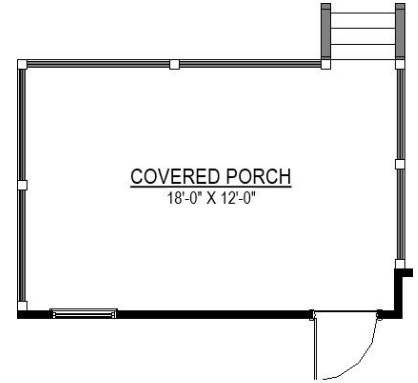
Options



OPT. LUXURY OWNER'S BATHROOM



OPT. REAR SCREEN PORCH. SHOWN W/
OPT. DOUBLE SIDED F.P.
AVAILABLE W/ SCREEN PORCH OR COVERED PORCH



OPT. REAR COVERED PORCH